A photograph of a village in winter, with snow-covered roofs and trees. The scene is hazy, suggesting a misty or foggy day. The village is nestled in a valley, with rolling hills in the background. The overall color palette is muted, with greys, blues, and whites.

## Biomass sustainability in the building sector - recommendations for the NECPs

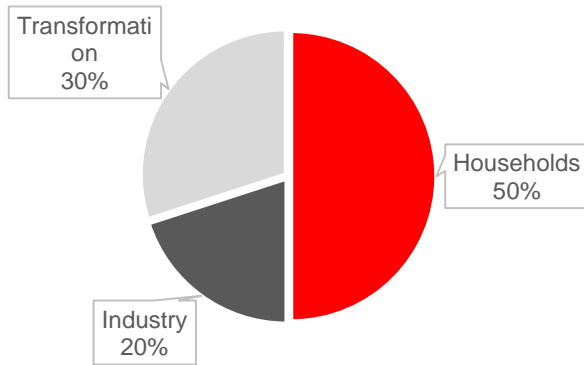
---

Adam Harmat  
WWF Hungary

# Why the building sector is important?

---

Primary solid biofuel use



Source: COMMISSION STAFF WORKING DOCUMENT -  
IMPACT ASSESSMENT: Sustainability of Bioenergy

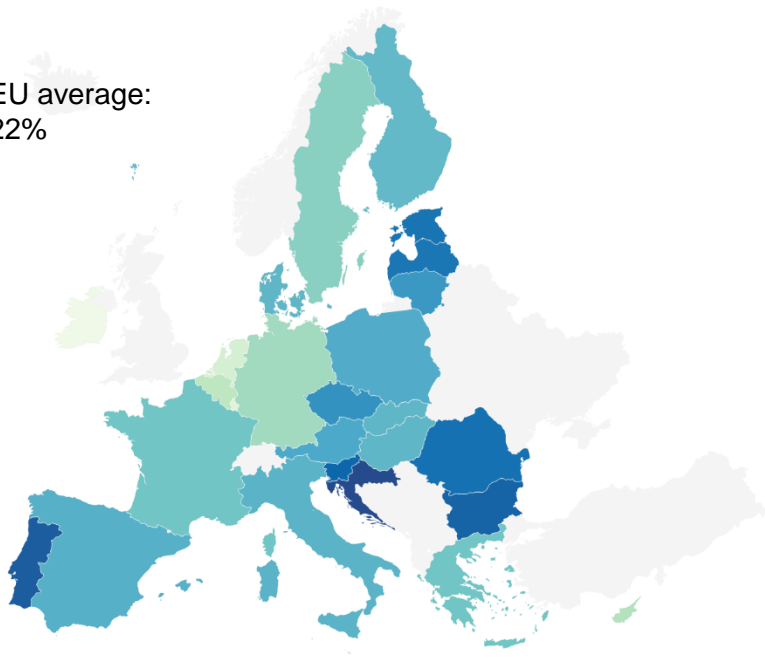
- At least half of the use is not covered by the RED
- Energy labeling (813/2013) and ecodesign requirement (2015/1189 and 2015/1185)
- EPBD
- Important note: the most problematic sector when it comes to biomass statistics > serious gaps between the supply and demand side (in case of BG, HU, RO: ~ 45-55% - more information [here](#))

# Which might be seen as a CEE-problem...

Share of primary solid biofuel in residential space heating [%]



EU average:  
22%

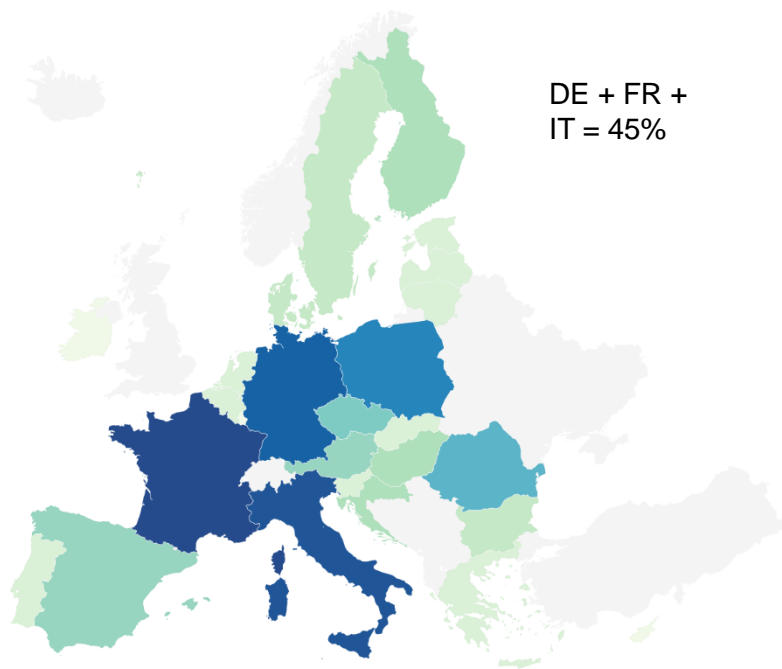


Created with Datawrapper

Share of total primary solid biofuel used by households in the EU, per country [%]



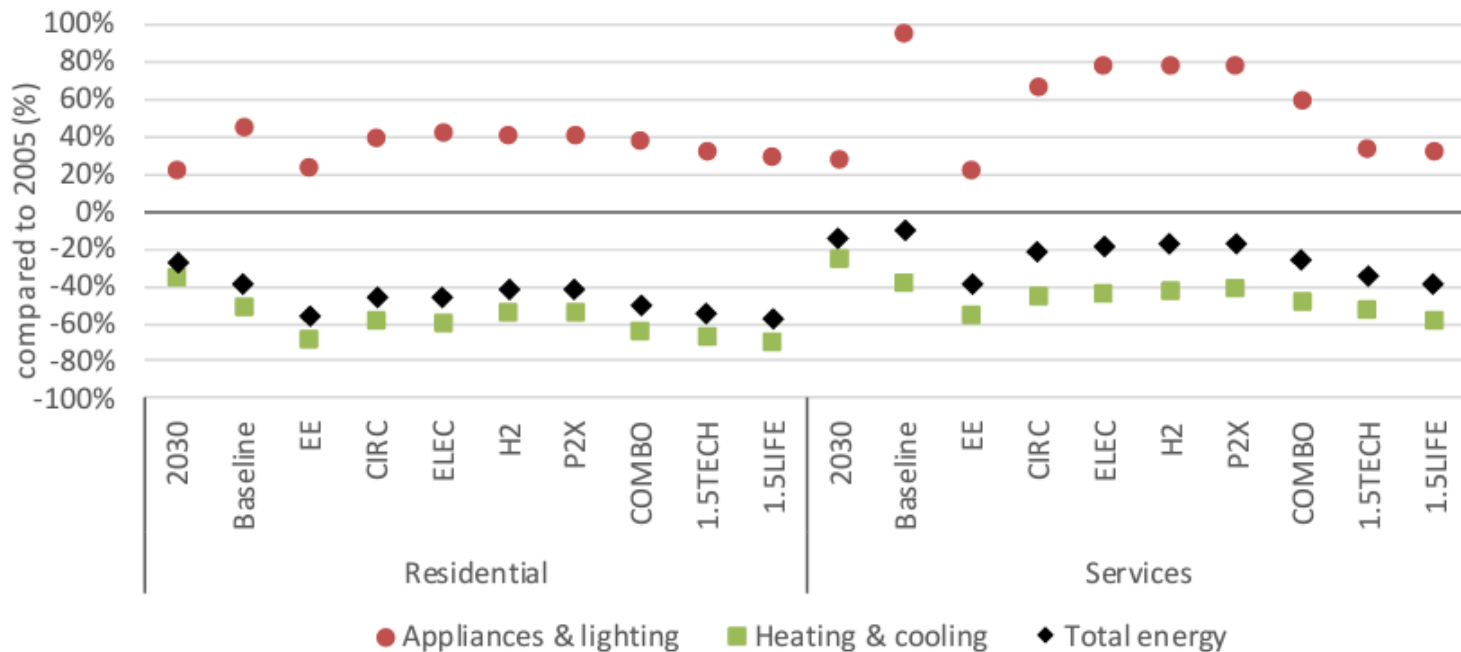
DE + FR +  
IT = 45%



Created with Datawrapper

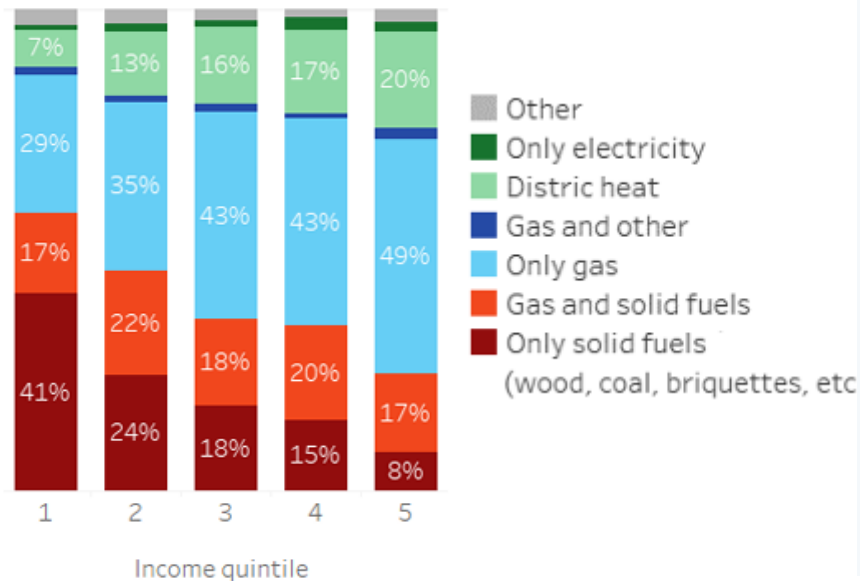
# Potential to decrease the current level of use

**Figure 39: Evolution of the energy consumption in buildings in 2050 (compared to 2005)**

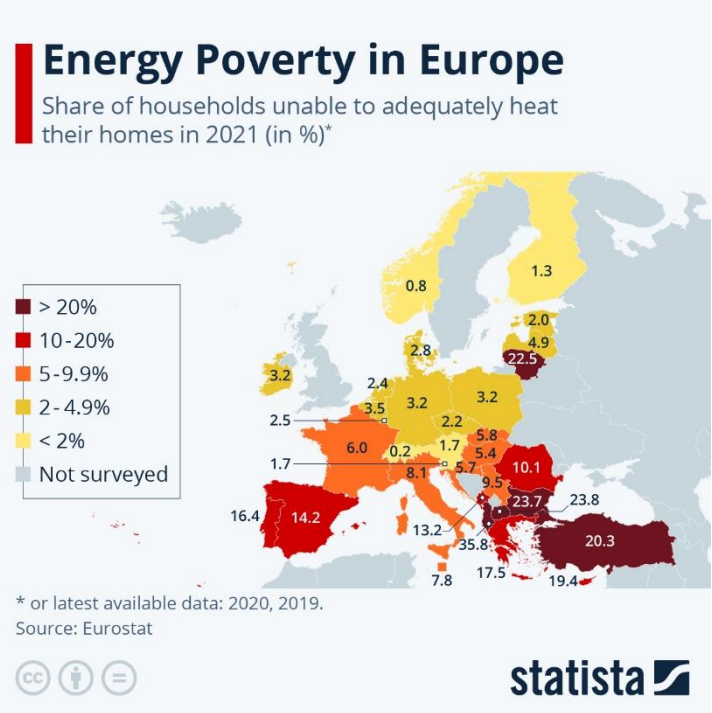


# But energy poverty makes it more complex...

Fuels used for household heating by income quintiles in Hungary (2019)



Source: [Habitat for Humanity Hungary: Fuel of the poor household use of firewood in Central and Eastern Europe](#)

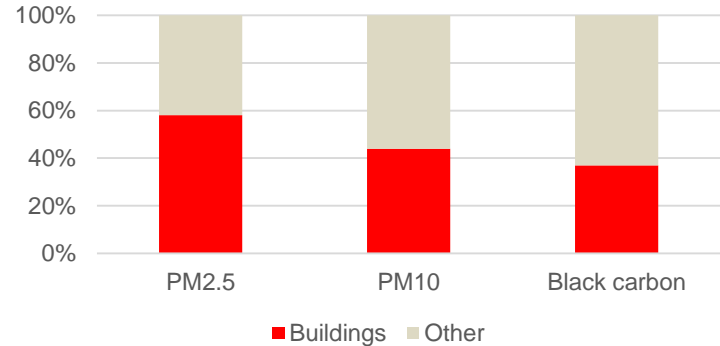


Source: <https://www.statista.com/chart/28652/share-of-people-in-energy-poverty-in-europe/>

# ... and there is a strong link with air pollution as well

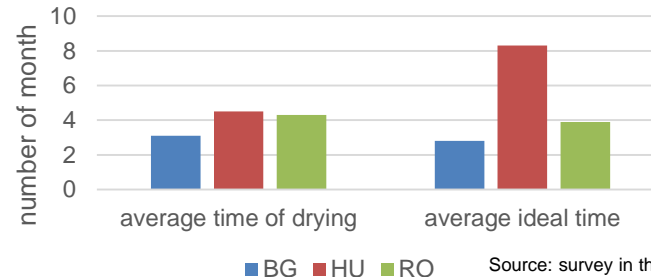
- NECP progress report requirement: quantification of the impact of air quality and emissions of air pollutants
- Ongoing infringement procedures against 13 MSs because of high PM pollution

Contribution to EU-27 emissions



Source: <https://www.eea.europa.eu/publications/air-quality-in-europe-2022/sources-and-emissions-of-air>

Average real vs. ideal time of drying firewood

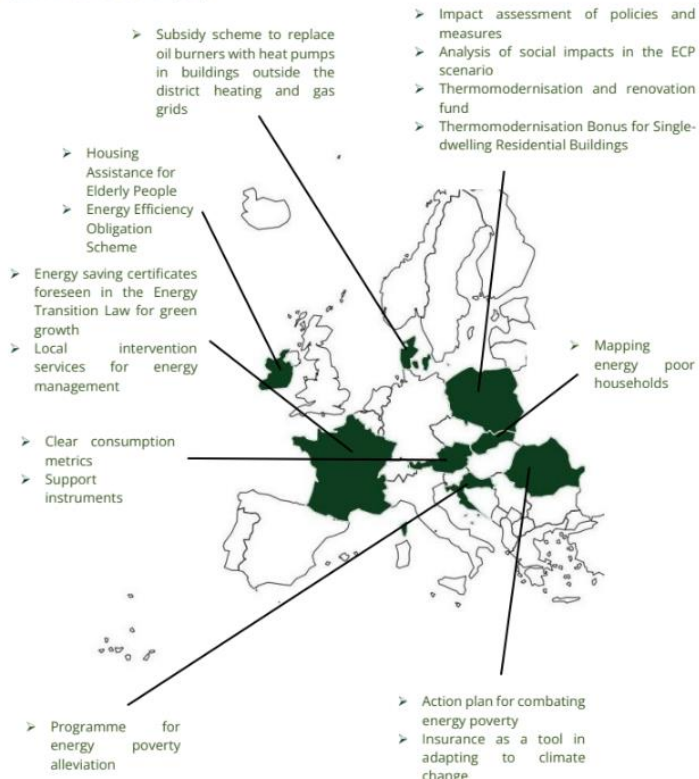


Source: survey in the LIFE BIO-BALANCE project

# Best practice collection

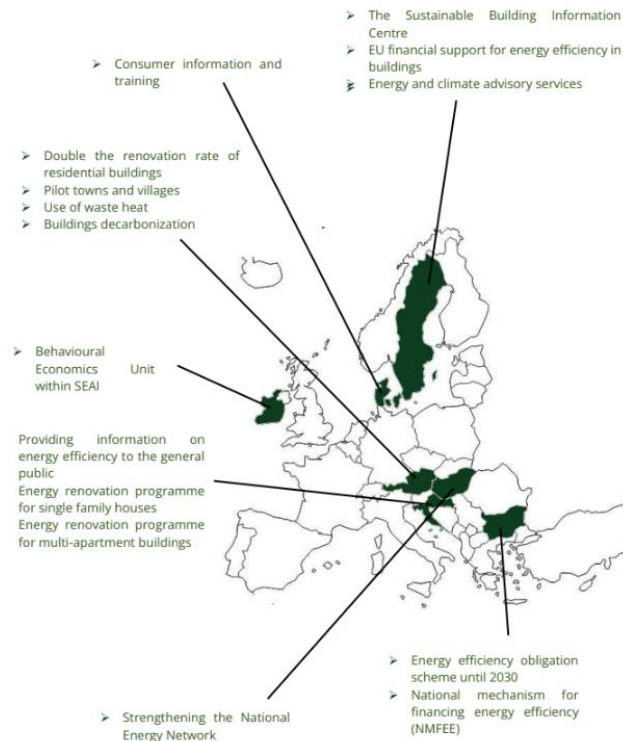
## ENERGY POVERTY

*(click on the title to navigate)*



## ENERGY EFFICIENCY

*(click on the title to navigate)*





# Key messages

- To have reliable trajectory on biomass supply and demand: detailed building stock inventory is needed <> national RE targets
- Well-addressed policies targeting households using firewood can contribute to
  - Energy efficiency target
  - LULUCF target
  - tackle energy poverty
  - reduce air pollution
- Trends are different...

